

VHR 250



Flat top surface

Tilting angle 165°



Stepless adjustment of all positions

Information

The VHR-serie of positioners has been designed in close cooperation with welders to suit industrial operations involving welding.

The VHR positioner is also ideal for assembly work, grinding etc.

The VHR is the positioner that solves the problem of achieving the correct position when working with workpieces that are difficult to handle.

Lifting, turning and tilting to an ergonomically appropriate working position can be controlled steplessly.

All functions can be remotely controlled with a 24 V control signal.

Pedal for starting and stopping the rotary feed.

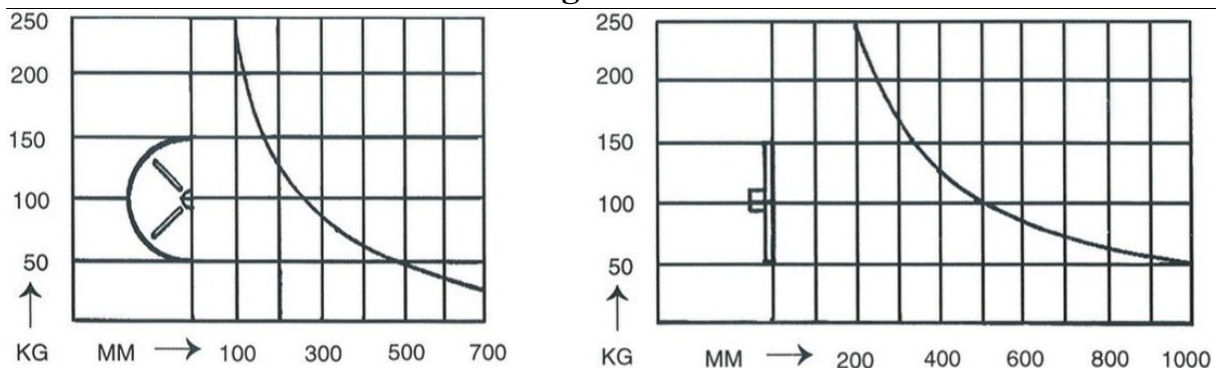
The welding earth for the work table is separate from the electrical protective earth.

Technical data VHR 250

Height of work table	485 – 1120 mm
Table diameter	650 mm
Max. horizontal load on table	250 kg*
Speed of rotation	0,1 – 2,75 RPM
Tilting time (0° – 90°)	9 s
Max. tilting angle	165°
Max welding current	500 A
Remote control signal	24 V
Length x width	1350 x 680 mm
Weight	290 kg

* at 200 mm lifting point distance

Load diagram VHR 250



AxMek AB